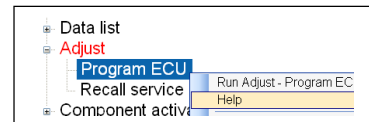


## CARS 2009 Release 3 News

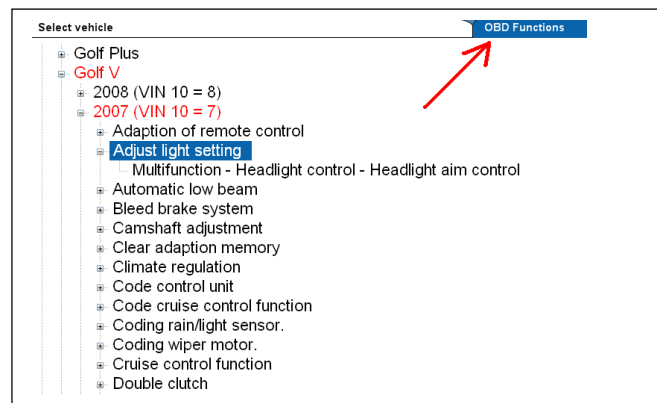
### *Program news: Focus on the user!*

Increased functionality on the information page with possibility to see what can be done on the car directly in the tree structure without having the car connected to the tester and also be able to read the help file for the function by right-clicking on selected function. Example:



### **OBD Functions**

Cars become more and more complicated and as a help to find where certain functions are located, we have now created a feature enabling the user to quicker find coding, adaption and adjustment functions. This feature is located on the information page and is a new tab behind the tree structure. This list shows all available functions for the selected car. If you click on the plus character in front of a function, it is shown in which system this specific function is found, you can also right-click on the function to read the help text or run the function directly. Example:



### **Note, activation required!**

These functions are activated first when you have been connected to a car and, e.g., read fault codes.

**The car database has been updated for a total of 19 brand names for model years between 1992-2010!**

See brief description below.

## **Audi**

A major update with many new systems and a new function for fast-scanning of all systems installed in the car and if these have any stored fault codes. This function is found in multifunctions, System status Gateway. Many new adaptation, coding, and adjustment functions. For example: language change function, parking brake service, steering angle calibration, coding cruise control, battery adaptation, coding of control unit, adaptation of throttle module, unlocking of extra heater, code in new wiper motor, rain sensor calibration and change service data, etc.

Updated models are A5 08-10, A3 05-09, A8 03-09, A6 05-, A4 08-09, Q7 07-09, TT 07-09, and Q5.

## **Alfa Romeo**

### **159**

06-09 updated with key programming function.

## **BMW**

Major update for BMW with many new systems and functions. For example, a new function for registering a battery change that has to be done when a new battery is installed. Several other new coding and adjustment functions such as language change and steering angle calibration. Updated models are 1-Series 04-06, 3-series 05-08, 5-series 03-08, 6-series 04-07, 7-Series 02-06, X5 07-08, Z4 03-06.

## **Chrysler**

### **300C LX**

has been given increased functionality for 3.0L diesel engine 06-09 and Central gateway 08-09.

### **Chrysler Sebring JR**

Updated with diagnostics for: ABS 05-06 with air bleeding function. Central control unit BCM 04-06, start interlock (immobilizer) 05-06, SRS 05-06, climate control 05-06.

### **PT Cruiser**

Updated with ABS 01-04 and 06-08, SRS 01-02, Instruments 01-02 and 06-08,

### **Grand Voyager**

Updated functions in the system BCM Central control unit 04-07 and climate control 02-07.

## ***IVECO***

### **Daily**

We are proud to introduce the Iveco Daily as a new model in our database!  
We start with diagnostics (read/erase fault codes and real-time data) on the engine systems Edc 16 Bosch and Edc 16 Bosch C39.  
In future releases we will update Iveco Daily with more systems and deeper diagnostics.

## ***JEEP***

### **Grand Cherokee WK**

Updated 06 with 5.7L and 4.7L engine, ABS, SRS, transmission, instruments, door modules, parking assistance, and heated seat module.

### **Commander**

Updated with 3.0L Common Rail diesel engine 06, SRS 06-07, instruments 06 and ABS 06-08.

## ***Dodge***

### **Journey JC**

Updated 06 with diagnostics for 2.0L CRD-engine.

## ***Fiat***

### **Croma**

Updated 06-09 with key programming function.

## ***Hyundai***

### **Accent**

Updates 03-04 with diagnostics for start interlock (immobilizer) and 1.6L gasoline engine.

### **Santa Fe**

Updated 06-08 with diagnostics for Central control unit.

## **Mercedes**

Major update for several models from 1995 up to year 2009 models.

### **M-Class (164)**

Updated 06-09 with diagnostics for start interlock (immobilizer), gear selector, air suspension with a service function to reduce or increase the system pressure and with activation functions, climate control with self-test function and teach-in function for new damper motors, steering wheel electronics, signal and registration module rear, upper control panel, and Central gateway.

### **GL-Class (164)**

Updated 06-09 with diagnostics for start interlock (immobilizer), gear selector, air suspension with a service function to reduce or increase the system pressure and with activation functions, climate control with self-test function and teach-in function for new damper motors, steering wheel electronics, signal and registration module rear, upper control panel, and Central gateway.

### **R-Class (251)**

Updated 06-09 with diagnostics for start interlock (immobilizer), gear selector, air suspension with a service function to reduce or increase the system pressure and with activation functions, climate control with self-test function and teach-in function for new damper motors, steering wheel electronics, signal and registration module rear, upper control panel, and Central gateway.

### **A-Class (169)**

Updated 05-09 with diagnostics for SRS. Updated to cover up to year 2009 models with diagnostics for engine, anti-spin, instruments, climate control, gear selector, transmission, start lockout (immobilizer), signal and registration module, steering wheel electronics, roof module, door modules, and power steering.

### **B-class (245)**

Updated 05-09 with diagnostics for SRS and Audio control unit.

### **SLK (R170)**

Updated 96-99 with diagnostics for 2.0L and 2.3L gasoline engines 01-04. Updated 99-04 with diagnostics for instruments, SRS, climate control, brake assistance, transmission, anti-spin, and service reset.

### **SLK (R171)**

Updated 04-08 with diagnostics for door modules.

### **CLC (203) New model in this release!**

08-09 With diagnostics for diesel and gasoline engines, start lockout (immobiliser), transmission, gear selector, anti-spin, SRS, signal and registration module front, signal and registration module rear, upper control panel, instruments, steering wheel electronics, and climate control.

### **C-class (204)**

Updated 07-09 with more functionality in the control unit for sun roof with real time data and activations, signal and registration module rear updated with reset for MAX/MIN-values, xenon lights updated with function for tourist mode on/off (right-hand or left-hand traffic). Anti-spin updated with driving test function and steering angle calibration.

### **GLK-class (X204)**

Updated 07-09 with more functionality in the control unit for sun roof with real time data and activations, signal and registration module rear updated with reset for MAX/MIN-values, xenon lights updated with function for tourist mode on/off (right-hand or left-hand traffic). Anti-spin updated with driving test function and steering angle calibration.

### **CLK (W208)**

Updated 97-02 with more functionality for several engines, instruments, transmission, gear selector, SRS, service reset, climate control, and headlight control, Updated also with new systems anti-spin and anti skid.

### **CLK (W209)**

Updated 04-07 with diagnostics for parking assistance, folding roll bar, and roof module.

### **E-class (W211)**

Updated 02-09 with diagnostics for air suspension with service functionality for increasing or reducing pressure in the system, raising or lowering individual struts, raising or lowering front and rear axle.

### **CL (215)**

Updated 99-06 with diagnostics for climate control, instruments, gear selector, and anti skid 04-06.

### **CLS (219)**

Updated 04-08 with diagnostics for Central gateway, steering wheel electronics, brake assistance system with service function to deactivate and activate the system when, e.g., replacing brake pads, anti skid, service reset, and parking assistance 04-05.

### **SL (R230) New model in this release!**

With diagnostics for 3.0L gasoline engine 01-06, Antiskid 03-08, Brake assistance system 03-08 with service function to deactivate and activate the system when, e.g., replacing brake pads, 01-08 updated with instruments, climate control, transmission, gear selector, start interlock (immobilizer), SRS, Central gateway, headlight control, steering wheel electronics, door module, parking assistance, roof module, pneumatic control unit, and service reset 03-08.

### **Vaneo (414)**

Updated 01-06 with diagnostics for gear selector and transmission.

### **S-class (220)**

Updated 98-03 with diagnostics for gear selector, transmission, antiskid, instruments, control unit for trailer connection, parking assistance, upper control panel, and headlight control.

### **C-class (202)**

Updated 92-00 with diagnostics for several anti-spin systems.

### **E-class (212) New model in this release!**

New E-class from 2009 with diagnostics for 2.1L diesel engine, control panel front, information screen front, instruments, transmission, main unit, and service reset

### **Sprinter (903)**

Updated 00-05 with diagnostics for 2.1 L diesel engine, instruments, start lockout (immobilizer), SRS, ABS with air bleeding function, antiskid, climate control, transmission, and central locking system.

### **Sprinter (904)**

Updated 00-05 with diagnostics for 2.1 L diesel engine, instruments, start lockout (immobilizer), SRS, ABS with air bleeding function, antiskid, climate control, transmission, and central locking system.

### **Sprinter (905)**

Updated 00-05 with diagnostics for 2.1 L diesel engine, instruments, start lockout (immobilizer), SRS, ABS with air bleeding function, antiskid, climate control, transmission, and central locking system.

## **Mitsubishi** *New car brand with manufacturer-specific diagnostics*

Models Colt VI, Lancer VIII, and L200 have been added.

### **Colt VI**

05-09 with diagnostics for 1.3 L gasoline engine, ABS, SRS, start lockout (immobilizer), climate control, Instruments, electric power steering, and service reset for instruments with diagnos-ID 0020.

### **Lancer VIII**

08-09 with diagnostics for 1.8 L diesel engine, ABS with steering angle calibration, SRS, instruments, start lockout (immobilizer), door control units, cruise control, rain sensor with calibration function that needs to be run in case of malfunction or when replacing sensor or windshield, climate control. steering with steering angle calibration, transmission, audio system, handsfree module, and light control.

### **L200 IV**

08-09 with diagnostics for 2.5L diesel engine, ABS, SRS, climate control, door control units, transmission, steering with steering angle calibration, and start lockout (immobiliser).

## **Mini**

### **R50/R53**

Has been updated 03-06 with diagnostics for system roof unit (sun roof).

## **Mazda**

### **Mazda 5**

Updated 04-07 with more functionality for 2.0L diesel engine with reset of engine oil at service, updated with reset functions that have to be performed when replacing parts, for example, mass air flow sensor, fuel pump, oxygen sensor, particle filter sensor, particle filter, and exhaust gas recirculation valve.

## **Opel**

### **Agila**

Updated 07 with diagnostics for 1.0L and 1.2L gasoline engines as well as 1.3L diesel engine.

### **Agila B New model in this release!**

07 with diagnostics for two new 1.3L diesel engines.

### **Antara New model in this release!**

07-09 with diagnostics for 2.4L and 3.2L gasoline engines, 2.0L diesel engine, ABS, instruments, climate control, transmission, start lockout (immobiliser), SRS and central electronics.

### **Astra H**

Updated 07-09 with diagnostics for a total of 23 new diesel and gasoline engines, start lockout (immobiliser) with key programming function, SRS, climate control, and instruments.

### **Combo**

Updated 07-09 with diagnostics for a total of 8 new diesel and gasoline engines.

### **Corsa C**

Updated 07-09 with diagnostics for a total of 14 new diesel and gasoline engines.

### **Corsa D New model in this release!**

07-09 with diagnostics for a total of 8 new diesel and gasoline engines, ABS, instruments, climate control, three new transmissions and SRS.

### **Insignia New model in this release!**

09 with diagnostics for a total of 10 new diesel and gasoline engines.

### **Meriva**

Updated 04-09 with diagnostics for a total of 10 new diesel and gasoline engines.

### **Signum**

Updated 07-08 with diagnostics for 3 new diesel and gasoline engines and an updated SRS system (03).

### **Sintra**

Updated 97-99 with diagnostics for 2.2L diesel and gasoline engines.

### **Tigra B**

Updated 07-09 with diagnostics for 1.8L gasoline engine and 1.3L diesel engine.

## **Vectra B**

Updated 00-01 with diagnostics for 1.6L gasoline engine.

## **Zafira B**

Updated 06-09 with diagnostics for a total of 8 new diesel and gasoline engines.

## **Vectra C**

Updated 07-09 with diagnostics for 3 new diesel and gasoline engines and an updated SRS system (03).

## **Peugeot**

### **107**

Updated 05-09 with diagnostics for 1.0L gasoline engine, ABS, power steering, SRS, and start lockout (immobiliser).

### **206**

Updated 03-08 with diagnostics for a total of 12 new diesel and gasoline engines, body computer 05-08, ABS 06-08, antiskid with steering angle calibration 06-08, instruments 06-08, climate control 06-08, SRS 06-08, and service reset 06-08.

### **207**

Updated 06-09 with diagnostics for a total of 11 new diesel and gasoline engines, ABS, SRS, instruments, multifunction display, body computer, power steering, steering wheel module, and service reset.

### **307**

Updated 05-08 with diagnostics for 5 new diesel and gasoline engines, multifunction display, climate control, body computer, and diesel additive.

### **308**

Updated 08-09 with diagnostics for a total of 13 new diesel and gasoline engines, ABS, instruments, climate control, SRS, and body computer.

### **407**

Updated 04-09 with diagnostics for a total of 13 new diesel and gasoline engines, ABS with air bleeding function, body computer, two new transmissions, SRS, instruments, climate control, power steering, tire pressure monitoring, door modules, radio, diesel additive, steering wheel electronics, multifunction display, rain sensor, and service reset.

## **Bipper New model in this release!**

08-09 with diagnostics for 1.4L diesel engine.

## **Partner Series 2**

Updated 08-09 with diagnostics for two 1.6L diesel engines, ABS, SRS, body computer and power steering.

## **Renault**

### **Koleos New model in this release!**

08-09 with diagnostics for 2.0L diesel engine with programming function for injectors, ABS with steering angle calibration, SRS, body computer, parking assistance, 4WD electronics, instruments with language change function, power steering, and parking brake.

### **Laguna II**

Updated 05-07 with diagnostics for body computer.

### **Espace IV**

Updated 03-04 with diagnostics for Instruments.

## **Seat**

### **Exeo New model in this release!**

Year 2009 model with diagnostics for 2.0L BWE engine with coding function for cruise control, adaptation for throttle body and rotational throttle. ABS with steering angle calibration and general coding function, climate control with teach-in of damper motors, SRS, instruments with general configuration and coding function, language change function. start lockout (immobiliser), light module with general configuration and coding, steering wheel electronics with coding function, parking assistance with general configuration, central electronics, comfort system with coding function, TPMS system with coding function, function to activate and deactivate transport mode, and service reset.

## **Skoda**

### **Praktik New model in this release!**

06-09 with diagnostics for the whole car.

### **Octavia II**

Updated 04-08 with diagnostics for 2.0L AXX engine with coding function for cruise control, adaptation throttle body, swirl damper, fuel pump, and kickdown adaptation. Central electronics with function for coding of rain sensor and wiper motor that has to be done after replacing component.

## **Volkswagen**

### **Tiguan**

Updated 04-08 with diagnostics for 2.0L TFSI engine (CAWB) with coding function for cruise control, adaptation throttle body, swirl damper, and kickdown adaptation, 2.0 TDI engine (CBBB) with functions to code control unit, code cruise control, resetting soot amount when replacing particle filter, adaptation of throttle body, swirl damper, exhaust gas recirculation valve, and boost pressure valve when replacing or reinstalling. Updated 08-09 with deeper diagnostic functions, unlock function for parking heater, coding of wiper motor and rain sensor in central electronics, language change function in instrument and coding function for parking assistance.

### **Sharan**

Updated to cover up to year 2009 models with diagnostics for the whole car with many new coding and adjustment functions.

### **Golf V**

Updated to cover up to year 2009 models with diagnostics for the whole car with many new coding and adjustment functions.

### **Golf Plus**

Updated to cover up to year 2009 models with diagnostics for the whole car with many new coding and adjustment functions.

### **Jetta**

Updated with many new coding and adjustment functions.

### **Touran**

Updated to cover up to year 2009 models with diagnostics for the whole car with many new coding and adjustment functions.

### **Passat V**

Updated to cover up to year 2009 models with diagnostics for the whole car with many new coding and adjustment functions.

### **Caddy III**

Updated to cover up to year 2009 models with diagnostics for the whole car with many new coding and adjustment functions.

### **EOS**

Updated with many new coding and adjustment functions.

### **Crafter**

Updated to cover up to year 2009 models with diagnostics for the whole car.

### **Transporter**

Updated to cover up to year 2009 models with diagnostics for the whole car with many new coding and adjustment functions.

### **Multivan**

Updated to cover up to year 2009 models with diagnostics for the whole car with many new coding and adjustment functions.

### **Polo IV**

Updated to cover up to year 2009 models with diagnostics for the whole car with many new coding and adjustment functions.

### **Golf Plus (09-) New model in this release!**

Year 2009 models with diagnostics for the whole car with many new coding and adjustment functions.

### **Passat IV**

Updated 00-05 with new coding functions for engine.

### **Passat CC**

Updated to cover up to year 2009 models with diagnostics for the whole car with many new coding and adjustment functions.

### **Golf IV**

Updated to cover up to year 2009 models with diagnostics for the whole car with many new coding and adjustment functions.

### **Scirocco**

Updated to cover up to year 2009 models with diagnostics for the whole car with many new coding and adjustment functions.

## **T4**

Updated 95-03 with coding function for AET engine.

## **Beetle**

Updated to cover up to year 2008 models with diagnostics for the whole car with many new coding and adjustment functions.

## **Touareg**

Updated to cover up to year 2009 models with diagnostics for the whole car with many new coding and adjustment functions.

## **Polo V New model in this release!**

Year 2010 models.