

Parts List



BASIC KIT

1	VG00-00000	CARMAN SCAN VG + MAINBODY
2	VG00-01000	RUBBER SHROUD
3	VG00-05000	CARRYING CASE
4	VG00-02000	OPERATION MANUAL
5	VG00-0400A	S/W DOWNLOAD CD (Os & Application)
6	VG00-0400B	S/W DOWNLOAD CD (Maintenance Information)
7	VG00-0400C	OPERATION VIDEO CD
8	VG00-07000	DLC MAIN CABLE 16P (3M)
9	AA00-07001	CIGAR LIGHT POWER CABLE
10	AA00-07002	POWER EXTENSION CABLE
11	VG00-07003	RS-232C CABLE
12	AA00-07004	USB CABLE
13	VG00-10000	SCOPE CABLE (4CHANNEL)
14	VG00-12000	SECONDARY IGNITION PICK UP
15	VG00-13000	TRIGGER PICK UP
16	VG00-06005	AC/DC POWER ADAPTER
17	VG00-07006	AC/DC POWER CORD
18	VG00-22000	RECHARGEABLE BATTERY SET

ASIAN ADAPTERS

19	AA01-07007	HYUNDAI/MITSUBISHI CABLE (12P)
20	AA01-06009	KIA/MAZDA ADAPTER (6+1PIN)
21	AA01-06008	KIA ADAPTOR (BLUE - 20P)
22	AA01-06010	DAEWOO/GM ADAPTER (12P)
23	AA01-06011	SSANGYONG ADAPTER (14P)
24	AA01-06012	SSANGYONG ADPTER (20P)
25	AA01-06014	TOYOTA ADAPTER (17R)
26	AA01-06013	TOYOTA ADAPTER (17C)
27	AA01-06016	SAMSUNG/NISSAN ADAPTER (14P)
28	AA01-07017	MITSUBISHI CABLE (12+16)
29	AA01-06019	HONDA ADAPTER (3P)
30	AA01-06020	HONDA ADAPTER (5P)
31	AA01-06021	MAZDA "C" ADAPTER (17P)
32	AA01-06022	SUBARU ADAPTER (9P)

EUROPEAN ADAPTERS

33	AA02-07026	AUDI/VW CABLE (2+2P)
34	AA02-06027	BMW ADAPTER (20P)
35	AA02-08028	BENZ 38PIN BOARD

36	AA02-07028	BENZ CABLE (3 LINER)
37	AA02-06037	OPEL ADAPTER (10PIN)
38	AA02-07030	PSA CABLE (2PIN)
39	AA02-07031	PSA CABLE (30PIN)
40	AA02-07032	RENAULT CABLE (12PIN)
41	AA02-06033	FIAT ADAPTOR (3P)
42	AA02-02003	OPERATION MANUAL (EUROPEAN)

AUS./USA ADAPTERS

43	AA03-07035	FORD CABLE (20PIN)
44	AA03-06034	HOLDEN CABLE (6PIN)

OPTIONAL PARTS

45	AA07-17039	PRESSURE VACUUM PICK UP
46	AA07-18039	TEMPERATURE PICK UP
47	AA07-19039	HIGH CURRENT PICK UP (1A ~ 600A)
48	AA07-20039	LOW CURRENT PICK UP (500mA ~ 100A)
49	AA07-21039	DLI IGNITION PICK UP

* Set of adapters and cables may vary by each market.

Nextech Overseas Network

Head Office

E&C Venture Dream Tower(The 3rd), 13th Floor,
Kuro-Dong, 197-33, Kuro-Gu, Seoul, R.O.Korea
TEL:(82)2-3140-1489 FAX:(82)2-3140-1449
E-mail:sales@nex-tek.com

North America Office

Nextech America Inc.
#202 Fashion Lane, Suite, 105, Tustin, CA 92780
TEL:(1)714 832 0100~1 FAX:(1)714 832 0123
http://www.nex-tek.com E-mail:csh@nex-tek.com

Japan Office

Nextech Japan
2454-2, MIKAGESINDEN, KOMORO-CITY
NAGANO-PREF., POST CODE 384-0808 JAPAN

Oceania Office

Nextech Oceania
#19 Daking St. North Parramatta NSW Australia 2151
TEL : (61) 2 9569 9655 FAX : (61) 2 9550 9359

Eastern Europe Office

1ST YAMSKKOGO POLIA STREET 9/13
MOSCOW, RUSSIA

CARMAN SCAN VG *Plus*

Diagnostic Innovation for Professional Users



"User friendly and valuable S/W, stable and fast H/W, Colorful and bright GUI and various maintenance information ! Carman scan VG plus will lead you to professional diagnostic world !"

Features

1. New Graphic User Interface

- Faster operation speed
- More comfortable user feel



2. New LCD and Touch Screen

- Brighter screen
- High accurate response
- LCD contrast adjustment function



3. Diagnosis only with Battery (OBD I type Vehicle)

4. 6 or 8 Cylinder DIS System measurement

- Measurement of 6 or 8 cylinders without extra connector
- ※ DLI Ignition Pickup is required for the test. (Option Part)

5. Under development functions

- CAN waveform measurement (10Mhz sampling)
- Diagnosis history management program
- Engine power balance test
- ※ This will be upgraded by new patch file on VG Plus



6. Long life Battery

7. Noiseless Audio device

8. CORE : Geode LX800-500MHZ

9. Operation System : WinCE 5.0

10. Battery Leakage Current : 300uA (about)

Specification

1. Hardware

- System : 512MB DD-RAM
- Storage medium : HDD 80GB
- Display : Wide 7" Color LCD, Touch Screen, VGA Out
- Comm. Port : DLC Port, Host USB 1.1, USB 2.0, Client LAN, RS-232
- Battery : PCM Li-ion battery, operable for about 1 hour

2. PROTOCOL

- U J1850 (VPW, PWM) - U KWP2000 - U ISO 9141-2
- U CAN, J1587 - U CCD
- U SW CAM - U Hi-Speed Serial

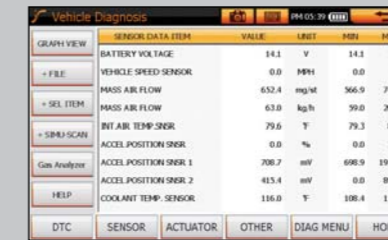
3. Scope & Meter

- Scope Spec
 - 4-channel digital scope
 - Voltage measurement range: ±500V
 - Ground level adjustment function
 - Waveform storage function
- Meter Spec
 - 4-channel multi-meter
 - Voltage measurement: ±500VDC
 - Frequency measurement: 0 ~200 KHz
 - Duty measurement: 0 ~ 100%
 - Resistance measurement: 0 ~ 10MΩ
 - Temperature measurement: -20 ~ 150°C
 - Pressure measurement: VACUUM - 100psi
 - PRESSURE - 200 Kpa

Scan Function



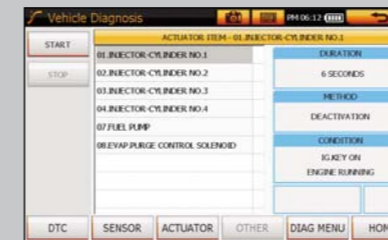
VEHICLE MENU



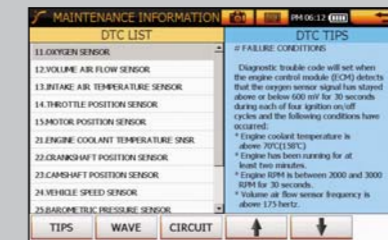
SENSOR PRINT OUT(TEXT)



SENSOR PRINT OUT(GRAPH)



ACTUATOR TEST



TIPS

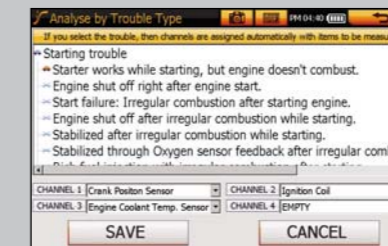


SERVICE DATA COMPARISON SCREEN

Scope & Meter Function



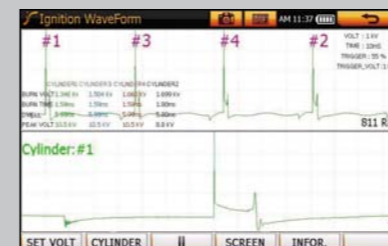
SCOPE & METER MENU



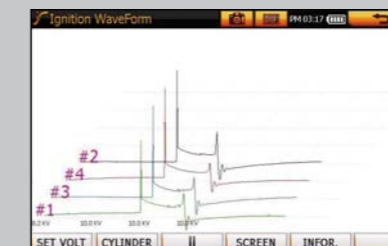
ANALYSE BY TROUBLE TYPE



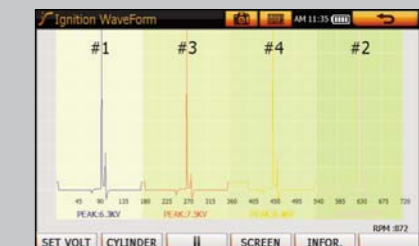
SCOPE TEST



SECONDARY IGNITION1



SECONDARY IGNITION2



SECONDARY IGNITION(720)

Vehicle Coverage

Asian Vehicles



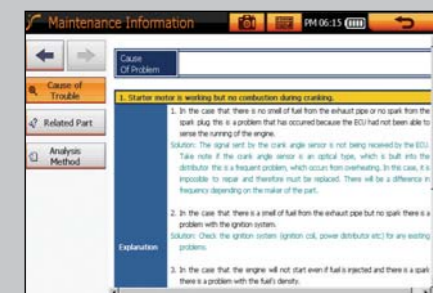
European Vehicles



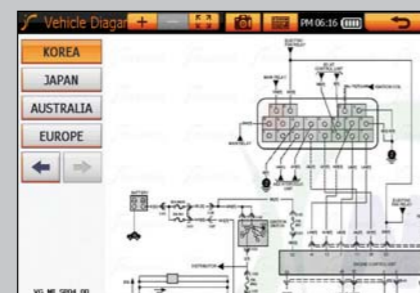
Australian / USA Vehicles



Service Information



SORTED BY TROUBLE



VEHICLE DIAGRAM



EMS CONFIGURATION